

# CERTIFICATE OF LOCATION OF GOVERNMENT CORNER

NORTH QUARTER Corner of Section 22, Township 106N, Range 41W

5th Principal Meridian, State of Minnesota, County of Murray.

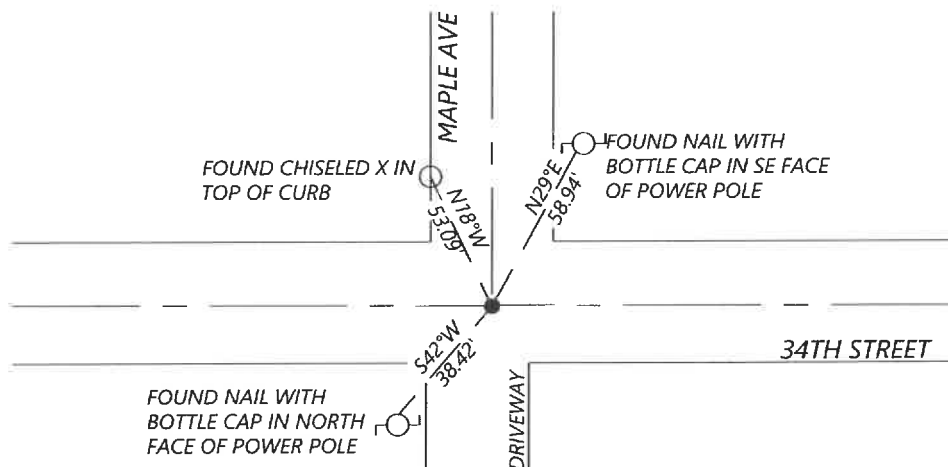
At the corner location shown on the sketch:

☒ On 10/16/2021 found a 1.5" IRON PIPE WITH MAG NAIL INSIDE, FLUSH WITH THE ROAD SURFACE.  
DATE

☒ left monument as found ☐ lowered monument ☐ removed monument (explain)

☐ On \_\_\_\_\_ placed a \_\_\_\_\_  
DATE

## SKETCH OF REFERENCE TIES



N.T.S.

Statement of evidence for this corner location is on back of this page.

I hereby certify that this document was researched and prepared by me or under my direct supervision and that I am a licensed Land Surveyor under the laws of the State of Minnesota.

Signature [Signature]

Date 4-19-2022 License No. 57085

Title:

☒ Land Surveyor ☐ Professional Engineer  
☐ County Surveyor ☐ County Engineer

OFFICE OF THE COUNTY RECORDER

County of Murray

I hereby certify that this document was filed in the Co.

Recorder's office at \_\_\_\_\_ M. on the 22nd day of April A.D. 20 22

County Recorder [Signature]

by \_\_\_\_\_, Deputy

DOCUMENT NO. \_\_\_\_\_

SETH WECKMAN  
Minnesota License No. 57085

**Statement of Evidence:**

North Quarter corner of Section 22, Township 106 North, Range 41 West, 5th Principal Meridian, Murray County, Minnesota.

- 1861 L.G.M. Fletcher, U.S. Deputy Surveyor, during the original public land survey a post was set and built mound with trenches, pits, and charred stake.
- 1934 F.A. March, Found limestone with "+" on top of gov. stake. Placed a concrete stone on top.
- 1975 Unknown insert from Murray County, insert shows a limestone and oak stake found. Placed a concrete monument above the stake and set 2 ties.
- 1984 Lyle E. Moseng (LS 11943), files Morningside Second Addition and shows a monument found for corner location.
- 2000 Lyle E. Moseng (LS 11943), files McCord Addition and shows a monument found for corner location.
- 2011 Unknown insert from Murray County, found a 1" iron pipe at the road surface. Coordinates shown on insert.
- 2014 Zieske Land Surveying Inc. (Dennis Ray Esplan, LS 43803), filed a survey and shows a found monument at the corner location.
- 2015 Zieske Land Surveying Inc. (Dennis Ray Esplan, LS 43803), filed a survey and shows a found monument at corner location.
- 2021 Westwood Professional Services searched the area and found a 1.5" iron pipe with a mag nail inside, flush with the road surface. The found monument lands in the East,West,North bituminous road intersection. Found one reference tie from 1975 which matches the distance shown, as well as two ties of unknown origin. The found monument agrees with the coordinates shown on the 2011 insert. Accepting the found iron pipe as the quarter corner.

*Analysis of the recovered data, field evidence and survey measurements, indicates that the monument found is the correct perpetuation of this corner. For additional information concerning this corner please contact Westwood Professional Services.*